

PARKING



PARKING
RESIN FLOORING

Prima
PAVIMENTI SPECIALI

MULTI-STOREY CAR PARKS
UNDERGROUND CAR PARKS
PRIVATE CAR PARKS
PUBLIC CAR PARKS
SILOS
GARAGES

BENEFITS

HIGH RESISTANCE CONTINUOUS SURFACES
NON-SLIP SAFETY
HIGH RESISTANCE TO VEHICULAR TRAFFIC
HIGH RESISTANCE TO CHEMICAL AGENTS
HIGH ELASTICITY
THERMAL RESISTANCE
FIRE RESISTANCE
CERTIFIED SOLUTIONS
ECO-SUSTAINABLE SOLUTIONS

DESIGN STAGE

The design and choice of a resin coating for parking for public or private use is of primary importance. The surface has to withstand medium-heavy foot traffic, fuel, oil and water at all times. Prima Pavimenti solutions comply with the European Europarking regulations.

Our structured approach is based on over 40 years of experience in the flooring sector – certified sustainable solutions and the know-how of listening to our customers to always provide the right answer to every need.

ACQUIRED **KNOW-HOW** IS EXPRESSED
IN THE **EFFECTIVENESS**
OF THE PROPOSED **SOLUTIONS**

SAFE AND LASTING CHOICES

FLOOR EVALUATION

The overall floor structure and each of its components (foundations, subfloors, screeds, industrial floors, and finishes) are complementary and work together to provide the performance and durability required for the specific activity.

FEATURES AND DETAILS

Evaluating all aspects, whether complex sites or a single client, type of business and requirements.

COST EVALUATION

Preparation of surfaces before receiving a new resin coating. Suitable resin solutions and performance

More: joints, signage.

CHOISE OF RESIN COATING

High resistance to abrasion and impact as well as mechanical stress caused by fuels and oils. Breathability, necessary for existing floors without vapour barrier and/or rising damp.

CONTINUOUS JOINTLESS SURFACES

High flatness with limited joints to avoid dirt accumulation. Dustproof.

GUARANTEES

Trustee applicator and durability warranties. Certified and reliable solutions for surface protection.

LIFESPAN

The life expectancy of a surface finish is determined by a combination of mechanical, chemical, thermal shock, and wear stress. These stresses are typical and different for each environment. Durable flooring refers to flooring that lasts for a long time without deterioration or loss of performance.

SHORT INSTALLATION TIME

Very fast installation time, application on existing floors with considerable time and cost savings.

SUSTAINABILITY

We use solutions that meet the highest standards of health and well-being. All floor coverings are low emission (VOC free) and meet the stringent parameters of the German AgBB standard.

EXPERIENCE

For over 40 years we have been dealing with the flooring of reference companies in every sector.

MAINTENANCE

Resin systems ensure durability and avoid high maintenance costs. Scheduled and targeted cleaning is required to maintain performance.

LEED

The resin system or polyurethane cement coating used includes a LEED® information statement detailing how it can contribute to the building's LEED credits.

**QUALITY IS VISIBLE
AND 100% CERTIFIED**

PARKING



SOLUTIONS HIGH PERFORMANCE FOR EVERY NEED

MULTI-STOREY CAR PARKS
UNDERGROUND CAR PARKS
PRIVATE CAR PARKS
PUBLIC CAR PARKS
SILOS
GARAGES

REFURBISHMENT WITHOUT COMPLETE DEMOLITION

Floors in underground car parks, multi-storey car parks and garages are subject to many stresses and strains caused by the constant passage of vehicles. When renovating floors, it is necessary to choose certified solutions that guarantee high standards of quality, performance, safety and durability, combining functionality and aesthetics.

Resin coatings can be applied to existing concrete surfaces, even the most worn and deteriorated ones, with relatively limited intervention times and, consequently, with reduced downtime of the structure, optimising time and costs.

COMBINE
SAFETY AND COMFORT



MULTI-LAYER EPOXY SYSTEM

Epoxy-coated multi-layer floors provide surfaces with sufficient thickness to mitigate the imperfections of the original floor and offer excellent resistance to mechanical and chemical loads. Multiple resin layers are applied. Quartz sanding of each resin layer ensures perfect adhesion between layers, maintaining non-slip properties and improving mechanical strength.

MULTI-LAYER POLYURETHANE

Elastomeric polyurethane systems are widely used where major resistance is required. Several layers are applied, based on two-component epoxy resin (possibly quartz sanding) or polyurethane resin. These are particularly resistant systems that bridge and even out cracks in the original surface and are particularly resistant to impacts, abrasion, and chemicals.

DRY POLISHING SYSTEM

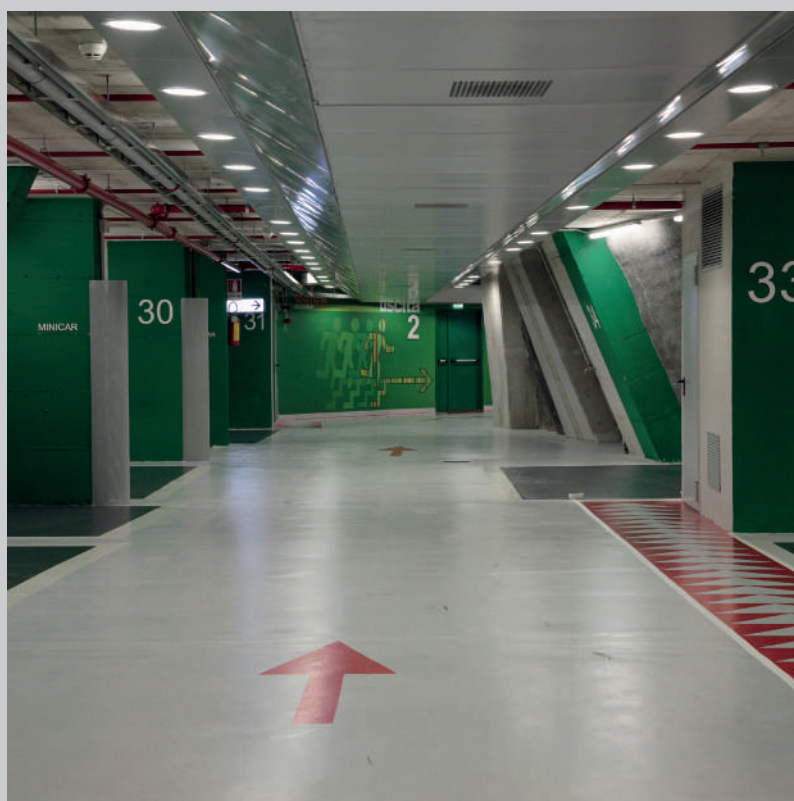
Treatment of concrete floors using the Prima Dry Polishing System polishing cycle. The system involves sanding and polishing the floor by passing the tools through with progressive diamonds. Final application of a two-component epoxy finish, protective, dust-proof, transparent, with a glossy effect.

PARKING

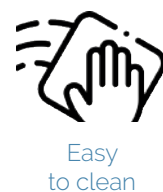
Prima
PAVIMENTI SPECIALI



Project : LIDL - Firenze - Italy



Project : Garage Morelli (NA) - Italy



CERTIFIED SYSTEMS

Multi-layer resin floors are the ideal solution for those in search of a functional and durable floor covering. This coating guarantees excellent mechanical properties, durability and impermeability thanks to the overlapping of one or more resin layers. Multilayer epoxy resin floors are continuous (without joints) and therefore easy to clean.

Meets the requirements of Class OS 8 (EN 1504-2), with anti-slip effect, driveway, resistant to medium-light traffic in areas used for parking and passage of wheeled vehicles.

Variable thickness from 0,8 to 3,5 mm, for industrial flooring

FEATURES

Anti-slip effect.
Safe for the environment as it does not contain solvents.
Durable: high resistance to wear and abrasion caused by continuous vehicle traffic.
Waterproof and dustproof.
Resistant to most aggressive chemical agents: oils, fuels, de-icing salts, lubricants, acids and diluted bases, saline solutions in general.
Easy to maintain.
It allows to obtain continuous and flat surfaces with excellent aesthetic appearance and high functional characteristics.
It reduces intervention times and, consequently, the downtime of the structure.
Excellent quality/price ratio.

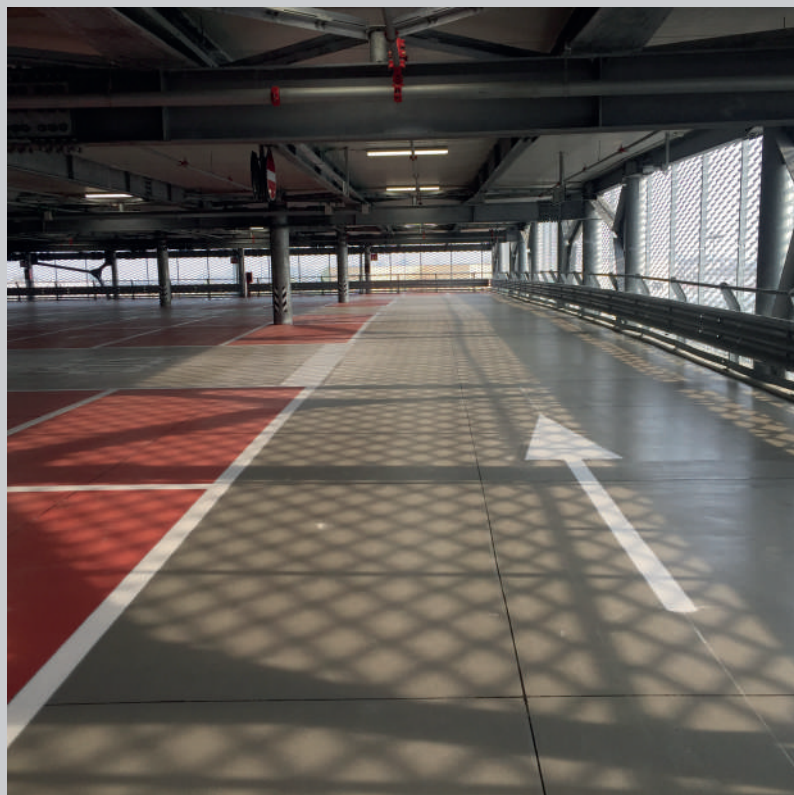
MULTI-LAYER EPOXY SYSTEM

MULTI-LAYERED VAPOUR PERMEABLE EPOXY SYSTEM

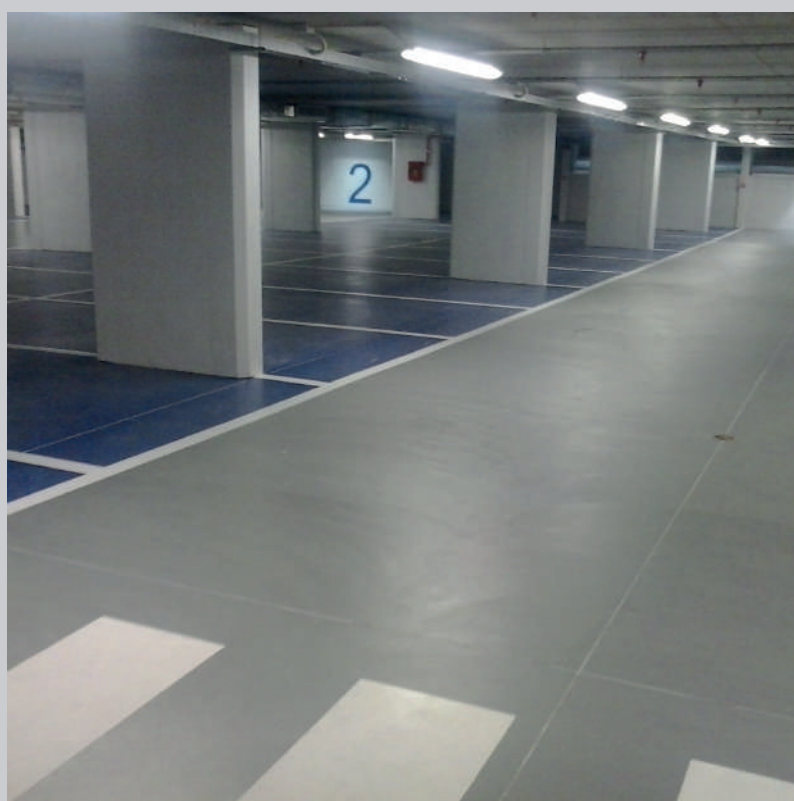
> SURFACES WITH RISING DAMP

PARKING

Prima
PAVIMENTI SPECIALI



Project : Serravalle Outlet - Italy



Project : piazza XXV Aprile Milano - Italy



High mechanical
resistance



High chemical
resistance



Non-slip



High UV
resistance



Easy
to clean

CERTIFIED SYSTEMS

MULTI-LAYER POLIURETHANE

The multilayer polyurethane systems are continuous, elastic and meet the requirements of classes OS 11b and OS13 (EN 1504-2) with good crack-bridging capacity (i.e. the ability to support the movements of the structures caused by thermo-hygrometric variations, static crack-bridging, and mechanical stress, dynamic crack-bridging).

Driveways, resistant to heavy traffic of wheeled vehicles in car parks and ramps, even outdoors.
Spessore variabile da 2 a 3 mm,

FEATURES

Good crack bridging ability even at low temperatures down to -20°C.
Waterproofing of the treated surfaces (for subsidence of the substrate within the crack bridging capacity of the system).
Good mechanical resistance.
Anti-slip effect.
Durable, with high resistance to wear and abrasion caused by the constant passage of vehicles.
Resistance to UV rays.
Easy to maintain.
It allows to obtain continuous surfaces with an excellent aesthetic appearance and high functional characteristics. It reduces intervention times and, consequently, downtime of the structure.

PARKING

Prima
PAVIMENTI SPECIALI



Project: Carrefour Montecucco (TO) - Italy



High resistance
to loads



High chemical
resistance



Non-slip



High resistance
to compression



Easy
to clean

CERTIFIED SYSTEMS

Treatment of concrete floors using the Prima Dry Polishing System polishing cycle. The system involves sanding and polishing the floor by passing the tools through with progressive diamonds.

Final application of a two-component epoxy finish, protective, dust-proof, transparent, with a glossy effect.

FEATURES

Dustproof, protective.
Glossy effect.
Easily washable and sanitizable.
Good mechanical and wear resistance.
Fast application with consequent reduction of structure downtime.

DRY POLISHING SYSTEM

PARKING

Prima
PAVIMENTI SPECIALI



Project: Coop Figline Valdarno (FI) - Italy



High resistance
to loads



High UV
resistance



Chemical resistance
to basic substances



Resistant to
scratches
and shocks



Easy
to clean

PRIMA FAST LINE SYSTEM®

LONG-LASTING HORIZONTAL SIGNAGE

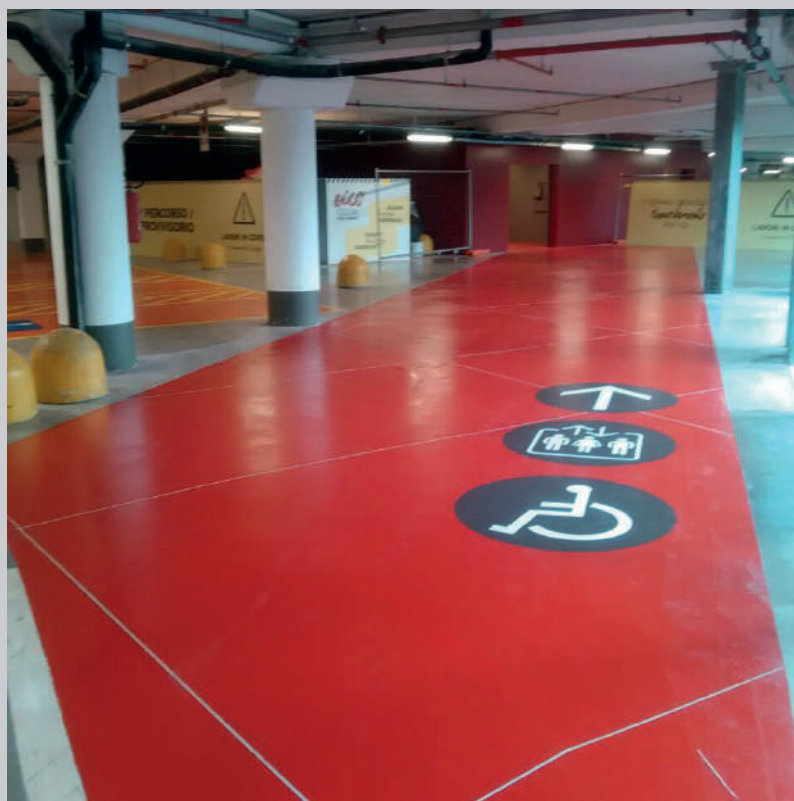
Prima Fast Line System® is a very high-quality, color-coated, UV-cured coating manufactured using special technology with very high chemical and mechanical performance for indoor and outdoor road markings. Prima Fast Line System® not only guarantees an extended lifespan but also complies with the latest environmental protection and safety regulations governing emissions of volatile organic compounds and pollution in general.

FEATURES

- Life extension. Long-lasting brilliance.
- High UV resistance.
- Increased abrasion resistance
- Excellent resistance to acid-base chemicals, etc., inks, colored pigments, solvents, and tire marks.
- Drastic reduction in application time.
- Quick treatment and reduced downtime costs.
- No problems with application temperatures (-26°C to +45°C)
- Reduced maintenance and cleaning costs.

PARKING

Prima
PAVIMENTI SPECIALI



OTHER PARKING AREAS

In addition to the car park itself, there are areas designed as transit areas for customers in shopping centres or visitors to hospitals and public buildings.

These areas also require a functional and resistant floor, integrated with horizontal and vertical signage to guide customers to lifts, exits, parking levels and parking spaces.

Resin solutions according to needs and surface characteristics.

FEATURES

Anti-slip effect.
Safe for the environment as it does not contain solvents.
Durable: high resistance to wear and abrasion.
Waterproof and dustproof.
Easy to maintain

ACCESSORIES

Customized signage, also UV resistant
Wall painting
Logos realization

TO THE PARKING AREA

PARKING

Prima
PAVIMENTI SPECIALI



High resistance
to loads



Alta resistenza
ai raggi UV



Resistenza chimica
alle sostanze di base



Resistant to
scratches
and shocks



Easy
to clean

PRIMAFLOOR CLEANER®

Based on our many years of experience in the flooring industry, we have selected best professional floor cleaning products and we created PrimaFloor Cleaner line, specific products for industrial cleaning and maintenance of floors, specially formulated to remove tough dirt it settles on surfaces in general, exercising their action quickly and energetically.

PRIMAFLOOR CLEANER PLUS®
DETERGENT FOR EXTRAORDINARY CLEANING

PrimaFloor Cleaner® Plus is particularly suitable for the extraordinary cleaning treatment of resin surfaces on industrial floors subject to heavy traffic.

PRIMAFLOOR CLEANER DAILY®
DETERGENT FOR ORDINARY CLEANING

PrimaFloor Daily Cleaner® is a detergent, degreaser, specially formulated to thoroughly clean with safety, promptly and economically dirty tenacious as grease, soot and heavy sludge from washable surfaces and floors.

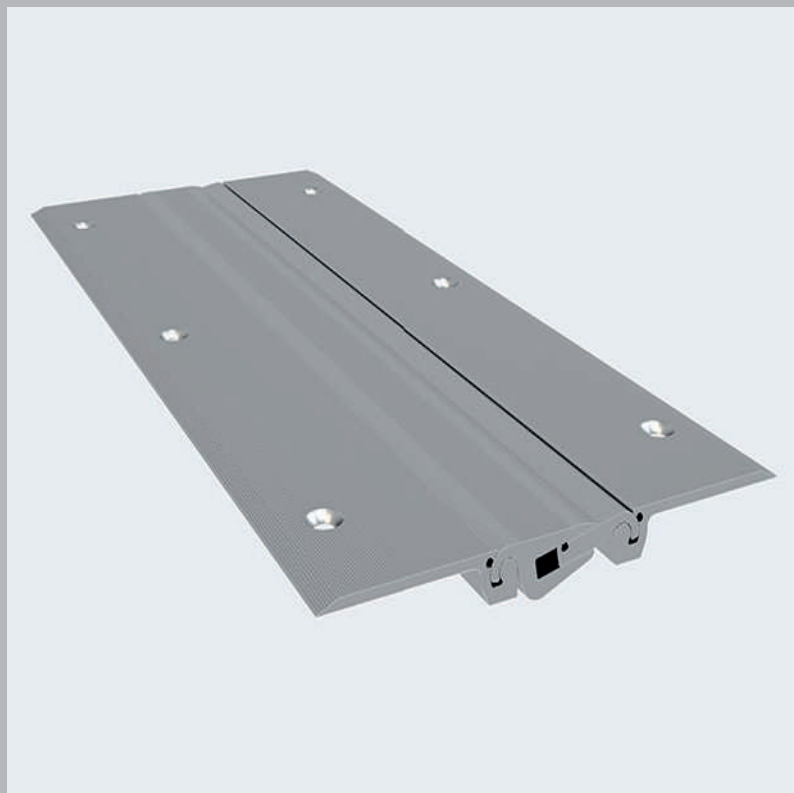
PLUS®

DAILY®

> PROFESSIONAL FLOOR CLEANING
DETERGENTS FOR INDUSTRIAL
RESIN FLOORS

PARKING

Prima
PAVIMENTI SPECIALI



Structural aluminium joint



Smart Joint® applied on finished resin floor

COMPLEMENTS

Structural joints for wheeled floors, characterised by a metal structure, necessary to withstand the high loads generated by the passage of forklifts, transpallets and heavy vehicles in general. The material used is aluminium, but it is not uncommon to use steel, which is more strong and suitable for logistics environments.

Smart Joint® is a prefabricated polymer composite joint for installation on old, damaged joints, even those with extensive movement and heavy industrial traffic. It becomes part of the floor and is applied with total adhesion to the existing substrate. After installation, it is a guarantee of flatness and continuity of the surface.

The surface can be used after just 12 hours. It requires no maintenance and does not deteriorate over time. It helps protect the health of forklift drivers by preventing wear and tear on the wheels of the handling equipment. It acts as a permanent bridge for thermal movement, allowing both vertical and horizontal movement of the floor.

STRUCTURAL JOINTS

SMART JOINT®

PARKING

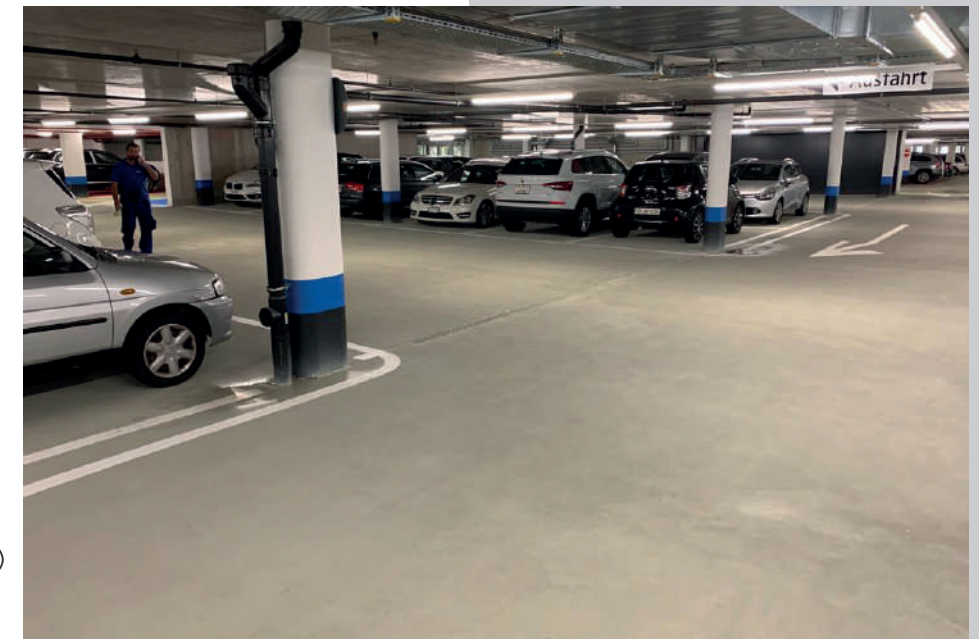
Prima
PAVIMENTI SPECIALI

CASE HISTORY

Our industrial know-how and expertise in this field, our partnerships as well as recognized qualities over the years, have allowed us to become a major player in this sector.

The best calling card is the flooring we have realised. In Italy, in Europe and, in the rest of the world.

SOME OF
OUR CUSTOMERS



Tecton - Zurigo (CH)



Aeroporto
Linate Parking
Italy



Ospedale Unico della Versilia
Lido di Camaiore (LU)
Italy

CONTACTS

Milano - Operational HQ

Via Piemonte, 23/B
20098 San Giuliano Milanese (MI)
T +39 02.98282914

Torino - Head Office

Via Vittorio Amedeo II, 19
10121 Torino
T +39 011.0714790

info@primapavimenti.it
www.primapavimenti.it

Switzerland

Pavimenti Speciali Srl - Talenture S.A.
Riva Albertolli 1
6900 Lugano - Switzerland

CERTIFICAZIONI



OS 6 Classe IV
OS 26 Classe IV
OG 1 Classe III
OG 3 Classe II

COMPAGNIA ASSICURATIVA



ASSOCIAZIONI



PARTNERS

APPLICATORI FIDUCIARI



SHERWIN-WILLIAMS.

PARTNER

