

WAREHOUSE



LOGISTICS & WAREHOUSE
RESIN FLOORING

Prima
PAVIMENTI SPECIALI

WHERE

Goods storage warehouses
Food, retail and, GDS warehouses
Automated warehouses
Temperature-controlled warehouses
Warehouses with goods at risk
AST/ESD - fire - explosion
High-bay warehouses
Freight forwarder logistics
Proximity logistics
Customs warehouses
Aseptic rooms in storage areas

BENEFITS

HIGH-STRENGTH CONTINUOUS SURFACES
HIGH FLATNESS
NON-SLIP SAFETY
IMPACT AND ABRASION RESISTANCE
COMPRESSION RESISTANCE
CERTIFIED SOLUTIONS
AST/ESD SOLUTIONS
ECO-SUSTAINABLE SOLUTIONS

Project: Poste Italiane - Forlì (FC) - Italy

DESIGN STAGE

The design of a warehouse floor is linked to the concept of loading. Static loads (generated under the racking uprights) and dynamic loads (produced by the goods handling equipment or AGVs), are evaluated, each characterised by different intensities and pressure levels, are evaluated. The industrial concrete floor is designed to meet specific requirements. The surface finish, on the other hand, must not only take into account the existing substrate, but must also be adequately implemented, taking into account the specific activities of each sector within the warehouse, traffic and storage systems.

Our structured approach is based on over 40 years of experience in the flooring sector – certified sustainable solutions and the know-how of listening to our customers to always provide the right answer to every need.

ACQUIRED **KNOW-HOW** IS EXPRESSED
IN THE **EFFECTIVENESS**
OF THE **PROPOSED SOLUTIONS**

SAFE AND LASTING CHOICES

FLOOR EVALUATION

The overall floor structure and each of its components (foundations, subfloors, screeds, industrial floors, and finishes) are complementary and work together to provide the performance and durability required for the specific activity.

FEATURES AND DETAILS

Evaluating all aspects, whether complex sites or a single client, type of business and requirements.

COST EVALUATION

Preparation of surfaces before receiving a new resin coating. Suitable resin solutions and performance. More: joints, signage.

CHOISE OF RESIN COATING

A dedicated solution for each area of the plant. High resistance to abrasion and impact, compression, and mechanical stress. Breathability is necessary in the case of existing floors without a vapor barrier and/or with rising damp. AST/ESD solutions for fire and explosion-risk areas.

CONTINUOUS JOINTLESS SURFACES

High flatness with limited joints to avoid dirt accumulation. Dustproof.

GUARANTEES

Trustee applicator and durability warranties. Certified and reliable solutions for surface protection.

LIFESPAN

The life expectancy of a surface finish is determined by a combination of mechanical, chemical, thermal shock, and wear stress. These stresses are typical and different for each environment. Durable flooring refers to flooring that lasts for a long time without deterioration or loss of performance.

FOOD WAREHOUSES
GDO AND GDS LOGISTICS
AUTOMATED WAREHOUSES
COLD STORAGE
AST/EAD WAREHOUSES
HIGH-BAY WAREHOUSES
PROXIMITY WAREHOUSES
ASEPTIC WAREHOUSES

QUALITY IS VISIBLE
AND 100% CERTIFIED

Project: Mercato Agroalimentare Milano (Italy)

SHORT INSTALLATION TIME

Very fast installation time, application on existing floors with considerable time and cost savings.

SUSTAINABILITY

We use solutions that meet the highest standards of health and well-being. All floor coverings are low emission (VOC free) and meet the stringent parameters of the German AgBB standard.

EXPERIENCE

For over 40 years, we have been in charge of the floors of the largest chemical-pharma industries in the country.

MAINTENANCE

Resin systems ensure durability and avoid high maintenance costs. Scheduled and targeted cleaning is required to maintain performance.

LEED

The resin system or polyurethane cement coating used includes a LEED® information statement detailing how it can contribute to the building's LEED credits.



SOLUTIONS CUSTOMIZED FOR ANY WAREHOUSE

REFURBISHMENT WITHOUT COMPLETE DEMOLITION

When renovating factory or department floors, the re-conversion of surfaces that are often severely compromised, damaged, worn out or, polluted by applying a new resin coating to the existing floor (industrial concrete, old resin or paint) is an option that can optimise aspects such as cost of intervention, quality of solution and limitation of downtime.

Before laying a new floor on an existing substrate, it is important to check the condition of the site and the substrate itself. Depending on the type of substrate, certain conditions must be present at the same time. Depending on the intended use and the activities to be carried out, the substrate is then suitably prepared and the resin system selected.

RESISTANCE AND
INTENSIVE USE

La nostra referenza: Poste Italiane - Peschiera Borromeo (MI)

MULTI-LAYER EPOXY SYSTEM

Multi-layer epoxy coatings provide surfaces with sufficient thickness to mitigate the imperfections of the original floor and offer excellent resistance to mechanical and chemical loads. Several layers of resin are applied. Quarz sanding of each layer to ensure perfect adhesion between layers, maintaining anti-slip characteristics and improving mechanical strength. They can also be self-levelling.

PRIMA POLISHING FAST SYSTEM

Prima Polishing Fast System is a rapid polishing system that transforms your flooring into a resistant surface, reflective and easy to clean. The treated floor will not withstand dust, get oils, and grease, etc. stretching over time maintenance works. Furthermore processing times of our treatment are very fast, in just 12 hours we make very large surfaces, immediately available for use.

POLYURETHANE CEMENT

Polyurethane cement floors are undoubtedly an excellent choice in the hospital, food processing and industrial sectors, due to their intrinsic characteristics of resistance to chemical and mechanical aggression. Polyurethane cement can be used in situations where epoxy resin, acrylic resin or methacrylic resin solutions have reached their limits. They have cleaning properties similar to stainless steel and are extremely resistant to boiling water and thermal shock.

WAREHOUSE



Project: Alleanza Salute pharma logistics
Campogalliano (MO) - Italy



Project: La Molisana automated warehouse
Campobasso (CB) - Italy



Impact
Resistance



Resistant
to acids and
oils



Non-slip



NO moisture
rising damp



Easy
to clean

CERTIFIED SYSTEMS

Multi-layer resin floors are the ideal solution for those in search of a functional and durable floor covering. This coating guarantees excellent mechanical properties, durability and impermeability thanks to the overlapping of one or more resin layers. Multilayer epoxy resin floors are continuous (without joints) and therefore easy to clean.

They are non-slip, ensuring safety and stability and meeting requirements of many industrial sectors.

Variable thickness from 0,8 to 3,5 mm, for industrial flooring.

FEATURES

Strong anti-slip effect.
High resistance to the wear and tear and abrasion caused by trolleys and moving vehicles.
Resistant to the most aggressive chemicals and oils.
Resistant to frequent washing.
Easy to wash and sanitize.
Reduces intervention time and, consequently, plant downtime.

MULTI-LAYER EPOXY SYSTEM

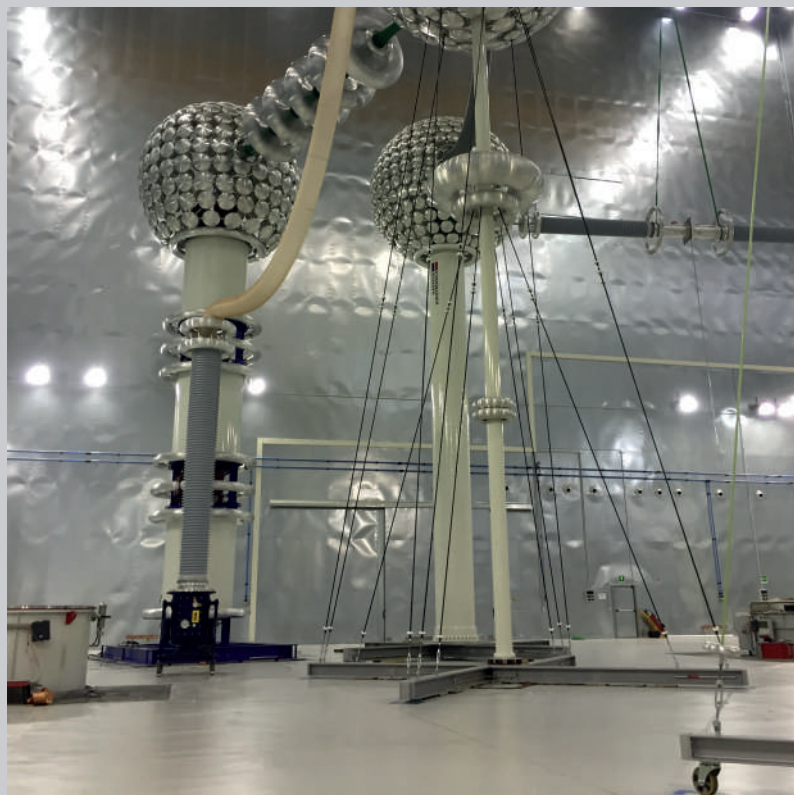
> AUTOMATED WAREHOUSES

MULTI-LAYERED VAPOUR PERMEABLE EPOXY SYSTEM

> SURFACES WITH
RISING DAMP

WAREHOUSE

Prima
PAVIMENTI SPECIALI



Power generation



Barrel cellar



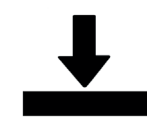
High resistance
to loads



High chemical
resistance



Non-slip



High resistance
to compression



Easy
to clean

CERTIFIED SYSTEMS

Epoxy screed is a floor that can withstand heavy traffic and heavy loads. It is an epoxy trowelled mortar system, ideal for restoring old industrial floors, with a thickness of 6 to 15 mm, which gives it exceptional mechanical and wear resistance.

It is also possible to apply the epoxy screed on broken tiles, heavily damaged floors or to repair minimal slopes and depressions in concrete floors without the need to completely demolish the existing substrate.

FEATURES

Non-slip finish or smooth-finish.

Fast restoration of slopes and depressions of badly deteriorated floors, cost & time reduction

Resistant to most aggressive chemical products

Easy to clean and sanitise

High resistance to wear caused by moving trolleys and vehicles

Quick to apply, reduces the time required to carry out work so minimises production down times

Suitable for aseptic premises.

EPOXY MORTAR

- > STORAGE AREAS WITH
HIGH MECHANICAL LOADS
- > REHABILITATION OF HEAVILY
DAMAGED OLD FLOORS
- > RECOVERY OF SLOPES AND SLOPES
- > ASEPTIC PREMISES

WAREHOUSE

Prima
PAVIMENTI SPECIALI



Solvent Deposit



Project: Auricchio - Pieve San Giacomo (CR) - Italy



High resistance
to loads



Thermal shock
resistance



Non-slip



Corrosive resistant



High chemical
resistance



HACCP

CERTIFIED SYSTEMS

Polyurethane-cement coatings have greater resistance and durability due to the technical properties of polyurethane-cement, with thicknesses ranging from 4 to 12 mm.

FEATURES

Temperature resistance. The increased thickness protects the joint with the substrate from high stresses and thermal shocks (up to 130°C depending on thickness) and high temperature water washing with a hydro-cleaner.

High mechanical strength. Excellent abrasion resistance, better shock absorption.

High resistance to chemicals: from strong acids to alkalis, fats, oils and solvents and hydrocarbons that can damage other types of resin flooring, typical of the chemical and petrochemical industry.

Very fast setting, even at low temperatures. Polyurethane cement floors are walkable after 8 hours, making them suitable for renovation and minimising downtime.

Very high standard of hygiene. Cleanliness is comparable to stainless steel and does not encourage biological growth.

Highly slip resistant.

POLYURETHANE CEMENT MULTI-LAYER

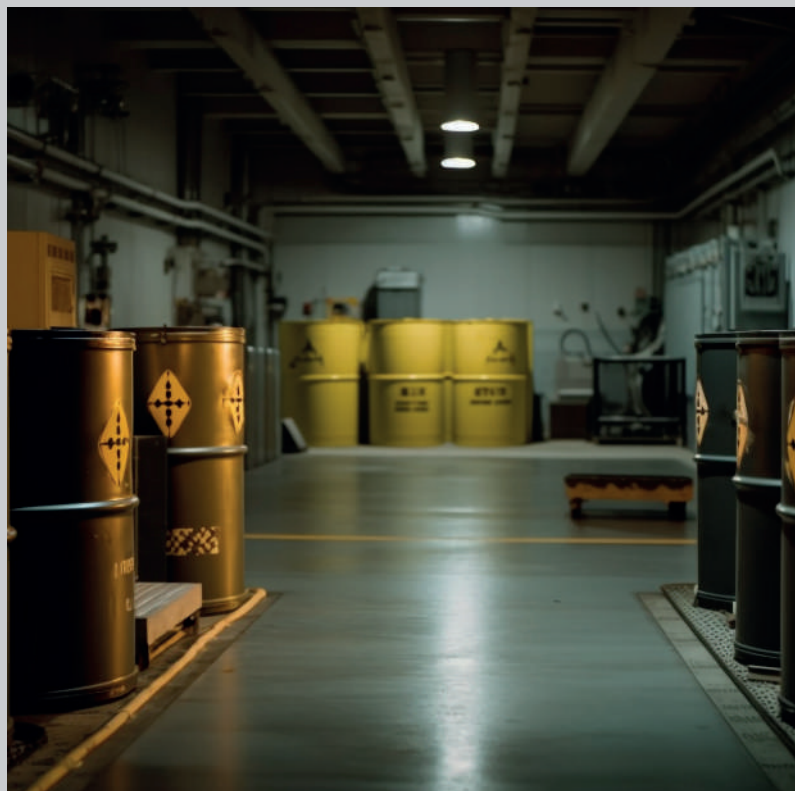
> WAREHOUSED WHERE
STRONG ACIDS OR BASES
ARE PRESENT
> FORKLIFT RELOADING AREA

SELF-LEVELLING MULTI-LAYER POLYURETHANE CEMENT

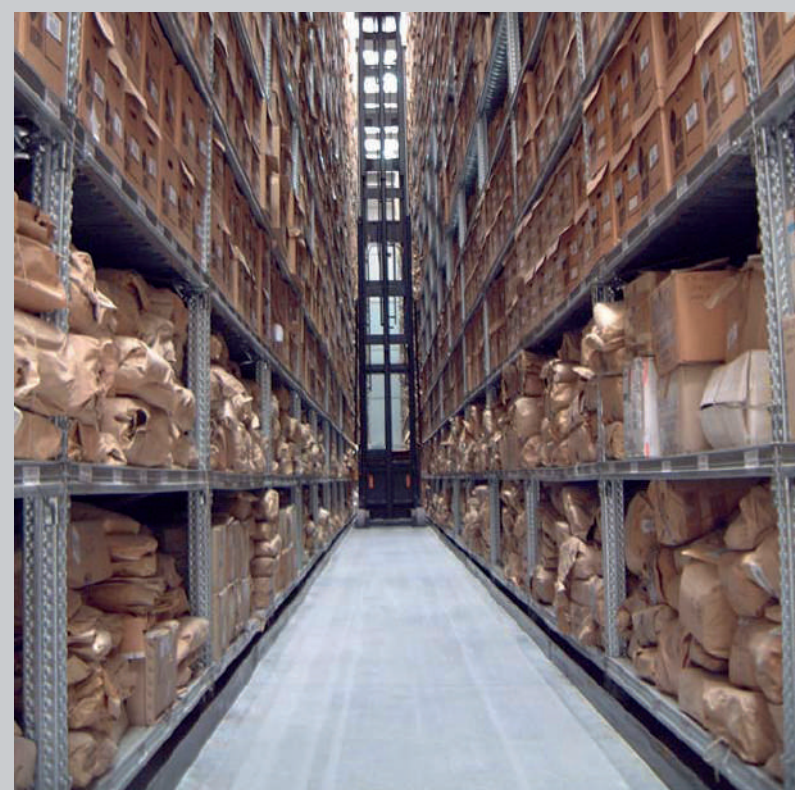
> FOODSTUFF WAREHOUSES

WAREHOUSE

Prima
PAVIMENTI SPECIALI



Deposito solventi



AGV wire guided warehouses



Fire Class



Conductive, Dissipative,
Anti-static



Non-slip



High resistance
to compression



High chemical
resistance

CERTIFIED SYSTEMS

For the passive protection of production or storage areas against electrostatic discharges, we offer resin flooring with conductive, dissipative, and antistatic systems.

When used as a primary grounding system, the flooring is capable of dissipating the electrostatic charges present on its surface or with which it comes into contact, in accordance with current standards for passive protection against electrostatic discharges.

These systems are required in areas where electronic and electrical components, flammable or explosive materials, and dust are handled and where the safety of workers, equipment, and the products themselves must be preserved.

Depending on the requirements, we propose resin floorings with conductive, dissipative, or antistatic systems with higher or lower electrical conductivity values. The formulations contain silicon carbide and/or graphite fibers, and a network of copper strips connected to the grounding system can also be embedded in the coating.

FEATURES

Ability to handle electrostatic charges through its 'conductivity' to 'grounding'
Low emissivity to AgBB standard.
Fire reaction class Bfl-s1.
High mechanical resistance. Tough resistance to abrasion, impact, and compression.
High chemical resistance: to oils, greases, soaps, and hydrocarbons.
Dustproof

CONDUCTIVES & ANTI-STATIC EPOXY

> AST/ESD CONSTRAINED AND HIGH
MECHANICAL LOADED DEPOSITS

ESD SELF-LEVELLING POLYURETHANE

> ATEX AREAS
> DEPOSITS OF FLAMMABLES AND EXPLOSIVES
> AGV WIRE GUIDED WAREHOUSES
> STERILE ENVIRONMENTS
> TECHNICAL ROOMS
> DATA PROCESSING CENTRES

WAREHOUSE

Prima
PAVIMENTI SPECIALI



Ikea - Verner (CH)



Piaggio Group



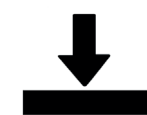
High resistance
to loads



High chemical
resistance



Non-slip



High resistance
to compression



Easy
to clean

PRIMA POLISHING FAST SYSTEM®

CONCRETE POLISHING SYSTEM

The Prima Polishing Fast System®, a certified system, has been conceived for logistics and warehouses, where the concrete floor is subject to rapid deterioration due to the continuous passage of materials handling vehicles, making it difficult to clean and generating a lot of dust.

Prima Polishing Fast System, is a rapid polishing system that transforms your flooring into a resistant surface, reflective and easy to clean.

The treated floor will not withstand dust, get oils, and grease, etc. stretching over time maintenance works. Furthermore processing times of our treatment are very fast, in just 12 hours we make very large surfaces, immediately available for use.

FEATURES

- Life Extension
- Dustproof
- Increased abrasion resistance
- Reduced liquid penetration
- Enhances aesthetic appearance
- Facilitates cleaning
- Significant cuts to maintenance costs
- Can also be applied on floors with a dusted finish
- Quick work on large surfaces

> WAREHOUSES AND LOGISTICS
WITH HIGH MECHANICAL LOADS
> RECOVERY OF DAMAGED SURFACES
> STORES

WAREHOUSE

Prima
PAVIMENTI SPECIALI



High resistance
to loads



UV Resistance



Chemical resistance
to basic substances



Resistant to
scratches
and shocks



Easy
to clean

PRIMA FAST LINE SYSTEM®

Prima Fast Line System® is a very high-quality, color-coated, UV-cured coating manufactured using special technology with very high chemical and mechanical performance for indoor and outdoor road markings.

Prima Fast Line System® not only guarantees an extended lifespan but also complies with the latest environmental protection and safety regulations governing emissions of volatile organic compounds and pollution in general.

FEATURES

- Life extension.
- Long-lasting brilliance.
- High UV resistance.
- Increased abrasion resistance
- Excellent resistance to acid-base chemicals, etc., inks, colored pigments, solvents, and tire marks.
- Drastic reduction in application time.
- Quick treatment and reduced downtime costs.
- No problems with application temperatures (-26°C to +45°C)
- Reduced maintenance and cleaning costs.

LONG-LASTING HORIZONTAL SIGNAGE

- > WAREHOUSES AND LOGISTICS
WITH HIGH MECHANICAL LOADS
- > PRODUCTION DEPARTMENT
AREAS DELIMITATION,
- > FOOTPATHS
- > STORAGE AREAS
- > PARKING SPACES, ROADWAYS

WAREHOUSE

Prima
PAVIMENTI SPECIALI



High resistance
to loads



UV Resistance



Chemical resistance
to basic substances



Resistant to
scratches
and shocks



Easy
to clean

PRIMAFLOOR CLEANER®

PLUS®

Based on our many years of experience in the flooring industry, we have selected best professional floor cleaning products and we created PrimaFloor Cleaner line, specific products for industrial cleaning and maintenance of floors, specially formulated to remove tough dirt it settles on surfaces in general, exercising their action quickly and energetically.

PRIMAFLOOR CLEANER PLUS®
DETERGENT FOR EXTRAORDINARY CLEANING

PrimaFloor Cleaner® Plus is particularly suitable for the extraordinary cleaning treatment of resin surfaces on industrial floors subject to heavy traffic.

DAILY®

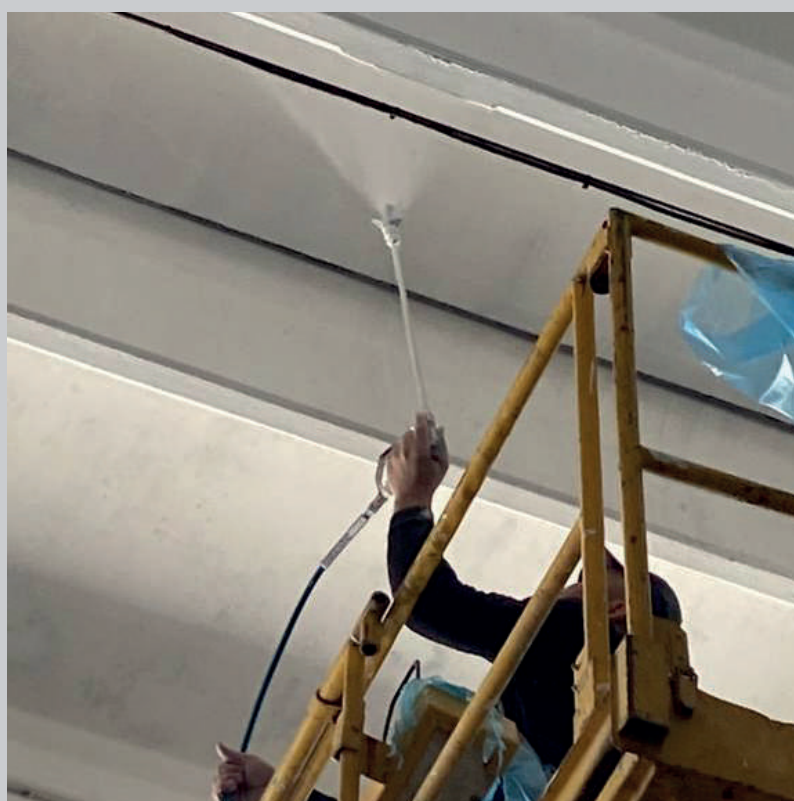
PRIMAFLOOR CLEANER DAILY®
DETERGENT FOR ORDINARY CLEANING

PrimaFloor Daily Cleaner® is a detergent, degreaser, specially formulated to thoroughly clean with safety, promptly and economically dirty tenacious as grease, soot and heavy sludge from washable surfaces and floors.

> DETERGENTI PROFESSIONALI
PER PAVIMENTI INDUSTRIALI
IN RESINA

WAREHOUSE

Prima
PAVIMENTI SPECIALI



COMPLEMENTS

The painting of the facades is certainly important as it represents the business card of the company. In this case, we refurbish the exterior metallic surfaces, not only to requalify them but also to protect them from atmospheric agents and corrosion.

We use only the best materials that are completely nontoxic and eco-friendly, durable, and can withstand climate agents and environmental factors that affect durability.

Industrial painting is often considered a technically simple and easy operation. In reality, an excellent result is obtained thanks to the specialization and experience gained over the years by the company, which has qualified personnel trained in the use of all necessary means in this field.

After the analysis and cleaning of the support, the painting proceeds with specific products that are suitable, depending on the case, suitable to solve problems such as the presence of mold or needs dictated by the nature of the work activity, such as food, fire protection.

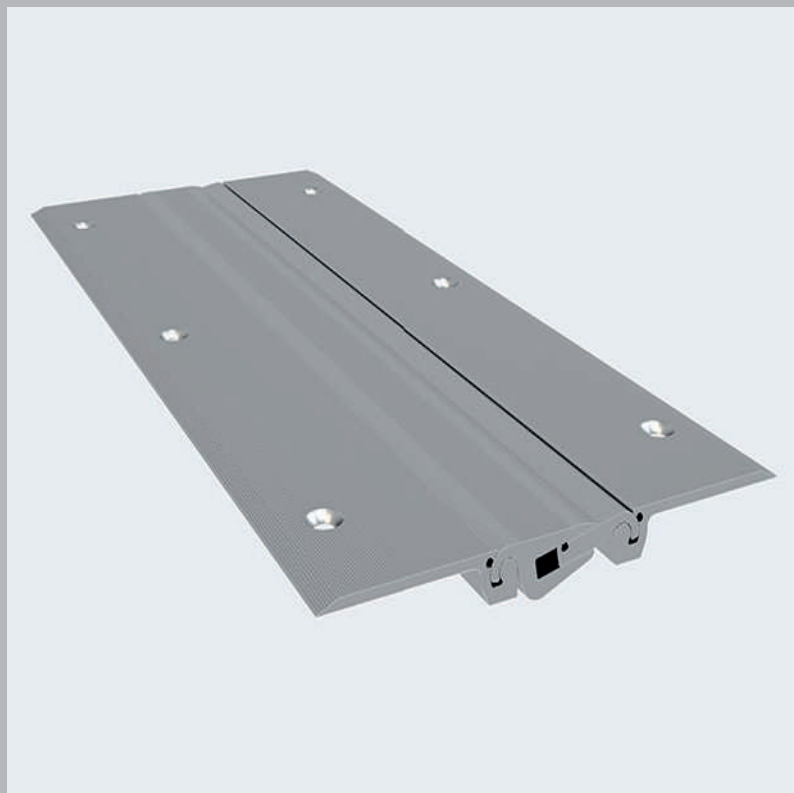
EXTERNAL METAL FACADES PAINTING

> WAREHOUSES AND LOGISTICS
> INDUSTRIAL WAREHOUSES
> RETAIL

INDUSTRIAL BUILDINGS INTERIOR PAINTING

WAREHOUSE

Prima
PAVIMENTI SPECIALI



Structural aluminium joint



Smart Joint ® applied on finished resin floor

COMPLEMENTS

Structural joints for wheeled floors, characterised by a metal structure, necessary to withstand the high loads generated by the passage of forklifts, transpallets and heavy vehicles in general.

The material used is aluminium, but it is not uncommon to use steel, which is more strong and suitable for logistics environments.

Smart Joint® is a prefabricated polymer composite joint for installation on old, damaged joints, even those with extensive movement and heavy industrial traffic.

It becomes part of the floor and is applied with total adhesion to the existing substrate. After installation, it is a guarantee of flatness and continuity of the surface.

The surface can be used after just 12 hours. It requires no maintenance and does not deteriorate over time. It helps protect the health of forklift drivers by preventing wear and tear on the wheels of the handling equipment.

It acts as a permanent bridge for thermal movement, allowing both vertical and horizontal movement of the floor.

STRUCTURAL JOINTS

SMART JOINT®

> WAREHOUSES AND LOGISTICS

WAREHOUSE

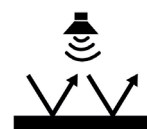
Prima
PAVIMENTI SPECIALI



Project: Nike European Headquarters — Hilversum, NL



Project: Amazon - Novara (NO) - Italy



Acoustic
comfort



UV resistance



Non-slip



Eco-Friendly



Easy
to clean

CERTIFIED SYSTEMS

When you think of upgrading your office flooring, you think of a solution that is both elegant and functional. The solutions you choose should not only be aesthetically pleasing but also guarantee technical performance and durability.

In other words, they should look good and perform well for many years with minimal maintenance. In addition to resin flooring, we offer alternative solutions. These include vinyl flooring, woven vinyl flooring, carpet, and linoleum.

These are suitable for all environments, from reception areas to offices and meeting rooms, where noise reduction is a requirement. They are also suitable for rooms with more specific needs, such as toilets, technical or server rooms (with anti-static requirements), corridors and staircases (with heavy traffic and anti-dust requirements), or rooms in contact with the ground (technical rooms, archives, or basements) with more basic functional requirements to protect flooring systems from external moisture.

FEATURES

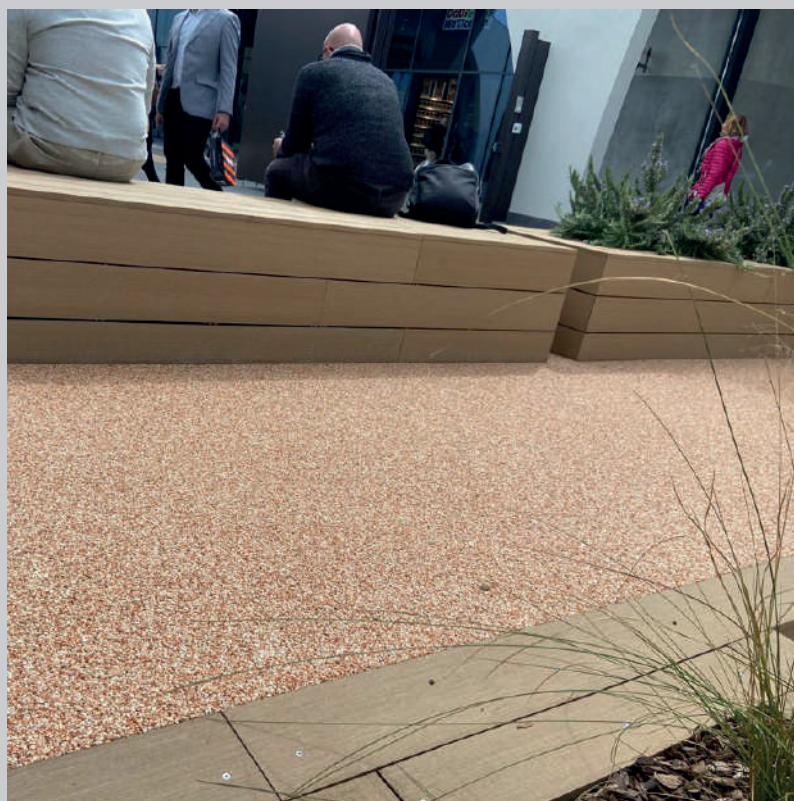
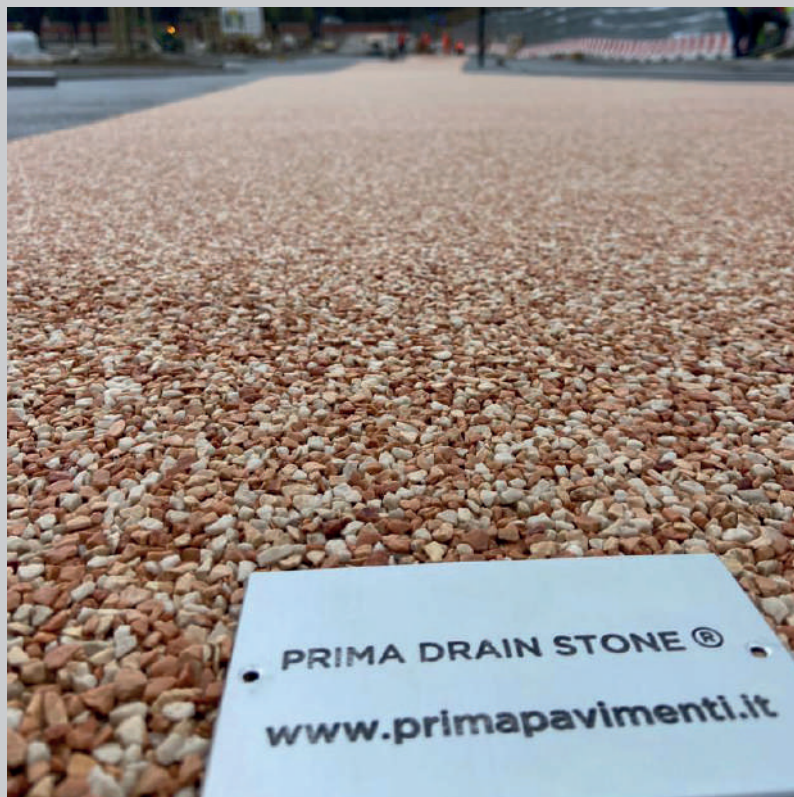
- Wear resistance
- Sound absorbing.
- Absorption of noise or shock from falling objects
- Low maintenance, easy cleaning and, sanitizing
- AST/ESD coatings, suitable for environments where protection from electrostatic discharge is required
- Safe for the environment and people
- Dustproof
- Unaltered over time
- Decorative floor coverings with matt or glossy finish, with natural effect, spatulate, cloudy, Venetian terrazzo type

OFFICE RENOVATION

- OFFICES, OPEN SPACES
- > BUSINESS CENTRES
- > MEETING ROOMS
- > HALLS & RECEPTION
- > RELAX & COMMON AREAS
- > TECHNICAL ROOMS
- > ARCHIVE ROOMS
- > STAFF CANTEENS
- > CHANGING ROOMS
- > TOILETS

WAREHOUSE

Prima
PAVIMENTI SPECIALI



TO DREAM - Urban District



Draining



Frost
Resistant



Non-slip



Eco-Friendly



Easy
to clean

PRIMA DRAIN STONE®

OUTDOOR

For the long lasting eco-friendly company redevelopment of outdoor pedestrian or vehicular areas (up to 35 quintals), Prima Drain Stone® is an outdoor flooring system totally permeable and environmentally friendly, complies to the hydrological cycle.

It is essential to select certified materials that help to improve outdoor areas by ensuring drainage or rainwater filtering and avoiding the creation of new impermeable surfaces (such as asphalt and cement) and/or unstable ones (such as self-locking paving stones and loose gravel).

Composed of natural aggregates mainly from production waste, with different grain sizes, kinds and colors, blended with a special eco-friendly binder.

ACCESSORIES: Tactile paths for the visually impaired

- > PATHWAYS
- > DRIVEWAYS
- > GREEN AREAS
- > CYCLE PATHS

WAREHOUSE

Prima
PAVIMENTI SPECIALI

CASE HISTORY

Our industrial know-how and expertise in this field, our partnerships as well as recognized qualities over the years, have allowed us to become a major player in this sector.

The best calling card is the flooring we have realised. In Italy, in Europe and, in the rest of the world.



SOME OF
OUR CUSTOMERS

Fattoria Tabacchi
Città Di Castello (PG)
Italy



Galbani - Melzo (MI)
Italy



Panini spa - Modena (MO)
Italy



WAREHOUSE

CONTACTS

Milano - Operational HQ

Via Piemonte, 23/B
20098 San Giuliano Milanese (MI)
T +39 02.98282914

Torino - Head Office

Via Vittorio Amedeo II, 19
10121 Torino
T +39 011.0714790

info@primapavimenti.it
www.primapavimenti.it

Switzerland

Pavimenti Speciali Srl - Talenture S.A.
Riva Albertolli 1
6900 Lugano - Switzerland



OS 6 Class IV
OS 26 Class IV
OG 1 Class III
OG 3 Class II



PARTNERS

